



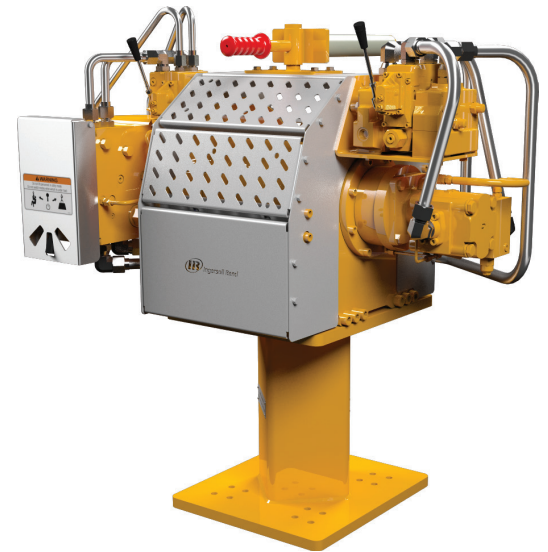
# Hydraulic Force Series™ Dual Purpose Winch

*Double the Duty. Half the Hassle. All the Safety.*

The new Ingersoll Rand® Hydraulic Force Series™ dual purpose winch lets you safely lift both people and assets, saving you time and money by only needing to install and maintain one piece of equipment instead of two. Built for tough conditions and tight spaces while keeping rider and operator safety top of mind, our dual purpose solution has you covered.

## For Land Rig Manufacturers...

Don't have the space or budget for both utility and man-rider winches? Our new Hydraulic Force Series™ dual purpose model is one winch with two modes designed to safely lift people, and efficiently lift equipment. As part of the Hydraulic Force Series™ portfolio, the dual purpose winch comes fully configured, and OEM-designed and tested, to meet your various lifting needs. Ingersoll Rand® provides a complete offering to expedite everything from procurement to rig commissioning. Controls are already plumbed and tested, making this winch a ready to use, drop-in solution.



Hydraulic Force Series™ dual purpose winch with all accessories

## For Land Rig Operators...

The Hydraulic Force Series™ dual purpose winch does double the duty, while keeping your crew safe with features like an emergency shut off valve, redundant brakes, and overload prevention in man-rider mode. And with the full Hydraulic Force Series™ winch portfolio offering a complete line of OEM-backed options and accessories, you can get all the winches you need for your unique operating environment from one provider. Our extensive channel streamlines the process for getting parts and product support for your operations from Texas to Alberta and beyond.

*For decades, businesses have trusted Ingersoll Rand® to provide safe and reliable material handling solutions. The Hydraulic Force Series™ is just the next step in helping you reach your goals.*

# Hydraulic Force Series™ Dual Purpose Winch

## Features and Benefits

Dual control levers help ensure the operator chooses the correct mode when lifting a person or load

Mode selector switch changes which mode winch operates in and the stainless steel cover closes to lock winch into desired operating mode

Durable drum guard helps protect operator while maintaining visibility of spooling

Simple manual rope guide helps spool wire rope evenly when not under load

Automatic negative static multi disc brake and counterbalance valves on each motor ensures safe operation even if the system were to lose pressure (not visible)

Cable tensioner (press roller) applies constant tension to wire rope, reducing bird-nesting (not visible)

Secondary hydraulic motor when engaged, enables safe lifting of people without applying too much line tension

Robust pedestal base lifts winch to ergonomic operating height and is stamped with SWL (vertical takeoff only)

Proprietary locking mechanism allows for two different motors to drive the winch depending on the mode selected



[ingersollrandproducts.com](http://ingersollrandproducts.com)

Ingersoll Rand (NYSE:IR) advances the quality of life by creating comfortable, sustainable and efficient environments. Our people and our family of brands—including Club Car®, Ingersoll Rand®, Thermo King® and Trane®—work together to enhance the quality and comfort of air in homes and buildings; transport and protect food and perishables; and increase industrial productivity and efficiency. We are a \$14 billion global business committed to a world of sustainable progress and enduring results. For more information, visit [ingersollrandproducts.com/hydraulicforce](http://ingersollrandproducts.com/hydraulicforce).

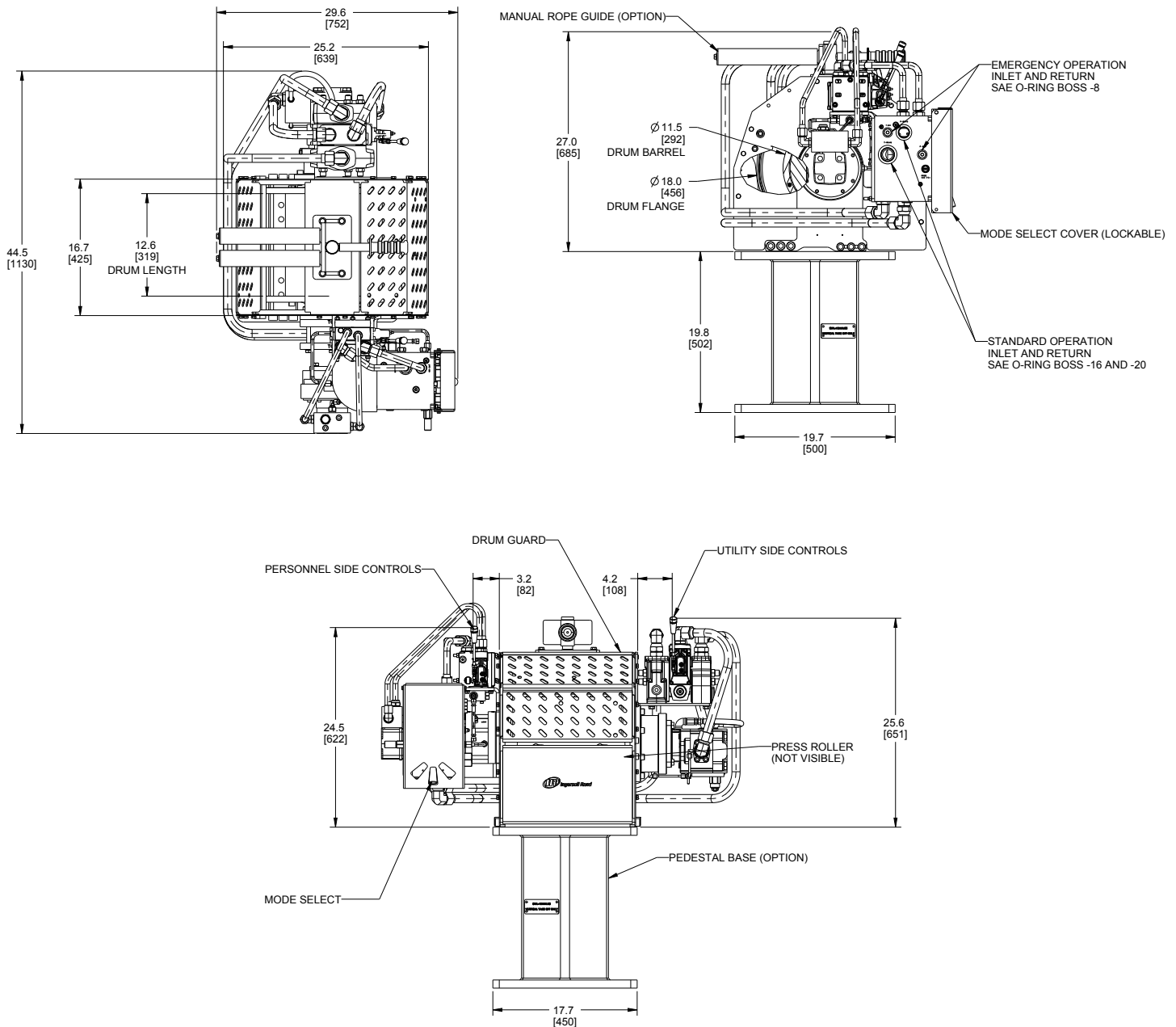


# Hydraulic Force Series™ Dual Purpose Winch Specifications

Specification/Feature	Utility Mode	Man-Riding Mode
<b>Motor Type</b>	Hydraulic gear	Hydraulic Geroler
<b>Horsepower</b>	57 HP	1.7 HP
<b>Lifting Capacity (lbs)</b>	12,000 lbs (rated on first layer)	350 lbs (rated on top layer)
<b>Top Layer Line Speed (fpm)</b>	157 fpm @ 45 GPM	100 fpm (hydraulically limited @ 4 GPM)
<b>Rope Storage Capacity (ft)</b>	373 ft (5/8" wire rope)	
<b>Working Rope Capacity (ft)</b>	285 ft (5/8" wire rope)	
<b>Operating Pressure (psi)</b>	2800 psi (max)	2800 psi (set at factory)
<b>Flow Rate (gpm)</b>	65 gpm (max)	4 GPM
<b>Unit Weight (lbs)</b>	650 lbs*	
<b>Drum Length (in)</b>	12.89"	12.89"
<b>Brakes</b>	Disc + counterbalance valve	Disc + counterbalance valve
<b>Controls/Throttle Type</b>	Manual proportional	Manual proportional
<b>Drum Guard</b>	Standard	
<b>Emergency Stop</b>	Ball Valve to Shut Off Hydraulic Fluid (standard)	
<b>Overload Protection</b>	N/A	Pressure reducing valve (set at factory)
<b>Spooling Assist (Press Roller)</b>	Standard	
<b>D/d Ratio</b>	19.2 (5/8" wire rope)	
<b>Pedestal Base</b>	Option	
<b>Manual Rope Guide</b>	Option	
<b>Other Features of Note</b>	Proprietary mode selector locks out mode that's not currently in use. Emergency lowering system standard for both modes (ports for connection to auxiliary HPU).	

\*Estimated weight of the winch

# Hydraulic Force Series™ Dual Purpose Winch Dimensions



[ingersollrandproducts.com](http://ingersollrandproducts.com)

Ingersoll Rand (NYSE:IR) advances the quality of life by creating comfortable, sustainable and efficient environments. Our people and our family of brands—including Club Car®, Ingersoll Rand®, Thermo King® and Trane®—work together to enhance the quality and comfort of air in homes and buildings; transport and protect food and perishables; and increase industrial productivity and efficiency. We are a \$14 billion global business committed to a world of sustainable progress and enduring results. For more information, visit [ingersollrandproducts.com/hydraulicforce](http://ingersollrandproducts.com/hydraulicforce).