



# Man Rider<sup>®</sup> and Personnel Lifting Winches

*Dedicated 150 kg (330 lb)*

*Dual Purpose 920-5,000 kg (2,035-11,000 lb)*





# When Tough Just Isn't Enough

## Dedicated 150 kg (330 lb) and Dual Purpose 920-5,000 kg (2,035-11,000 lb) Air Winches

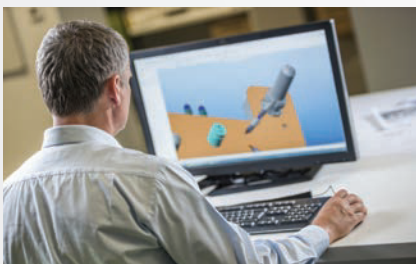


Since 1924, Ingersoll Rand has built extremely durable and reliable winches and hoists. Designed to work in harsh environments and built using rugged cast iron and steel, Ingersoll Rand doesn't take shortcuts and never uses inferior components. Ingersoll Rand Man Rider® and dual purpose winches are specifically designed to minimize the risks of lifting people. They meet strict safe-lifting standards and include features to help ensure the safety of workers. Ingersoll Rand pioneered the development of Man Rider® and dual purpose winches and has provided thousands of them over 30 years. This experience is built into every Man Rider® winch we sell. Trust Ingersoll Rand Man Rider® and dual purpose winches to help you protect your most precious asset, your people.

### Ingersoll Rand Man Rider® and Dual Purpose Lifting Winches:

- Multiple safety systems to help keep your personnel safe
- Rugged cast iron and steel construction for extreme durability
- Stainless steel components and marine grade paint for corrosion resistance
- Variable speed levers for precise control and built-in safety
- Easy configuration to meet worldwide standards and 3rd party type approvals
- Individual load testing before shipment with manufacturer's test certificate
- 30 years of experience designing and building thousands of Man Rider® winches that operate in the world's toughest environments
- High quality manufacturing in ISO 9001 level advanced facilities

## Special Orders



A significant portion of our business is providing customized solutions for specific applications. We recognize that not all jobs are created equal and that the most cost-effective solutions may not be in an off-the-shelf item. We've designed and manufactured winches and hoists for applications as simple as moving bags of lettuce, to as intricate as installing critical payloads on space vehicles, including high capacity loads 100 tons and above.

- Design for custom capacities
- Custom control systems
- Custom product modifications
- Witness testing and complete certification to most global standards
- Full data package with CAD drawings
- Dedicated project management for your project from conception to delivery
- Onsite services available including presale and evaluation

## For More Information

 [www.ingersollrandproducts.com/lifting](http://www.ingersollrandproducts.com/lifting)  [lifting@irco.com](mailto:lifting@irco.com)

# LS2-150 Hydraulic Offshore Man Rider®

150 kg (330 lb)

The Ingersoll Rand LS2-150 Hydraulic Offshore Man Rider® features a tough, full-stainless steel enclosure that protects moving parts and marine grade paint to stand up to the harsh environments found offshore.



## Ideal for:



Offshore



Onshore



Marine

Lifting Ratings at 10:1 design factor and performance at 105 bar (1,800 psi) inlet pressure									
Model	Line Pull Capacity			Lifting Speed at Top Layer	Operating Pressure	Max Flow with Rated Load	Max Drum Capacity	Rope Diameter	Net Weight
	First Layer kg (lb)	Mid Drum kg (lb)	Top Layer kg (lb)	m/min (f/fpm)	bar (psi)	l/min (gal/min)	m (ft)	mm (in)	kg (lb)
LS2-150HLP-L (offshore)	150 (330)	150 (330)	150 (330)	30 (98)	105 (1,523)	10 (2.64)	154 (505)	10 (3/8)	380 (838)

<sup>(1)</sup> Wire rope is tightly wound with no freeboard.

# LS2-150 Hydraulic Land Rig Man Rider®

150 kg (330 lb)

The Ingersoll Rand LS2-150 Hydraulic Land Rig Man Rider® is designed as a cost-effective solution for lifting people on land rigs. It's built-in safety features and rugged construction make this a durable winch no matter where your land rig operates.

**Operator Orientation Cover** ensures proper operation of the winch

**Two Automatic Brakes** for maximum rider protection and safety

**Slack Line Prevention System** automatically stops the winch from paying out in case of slack wire

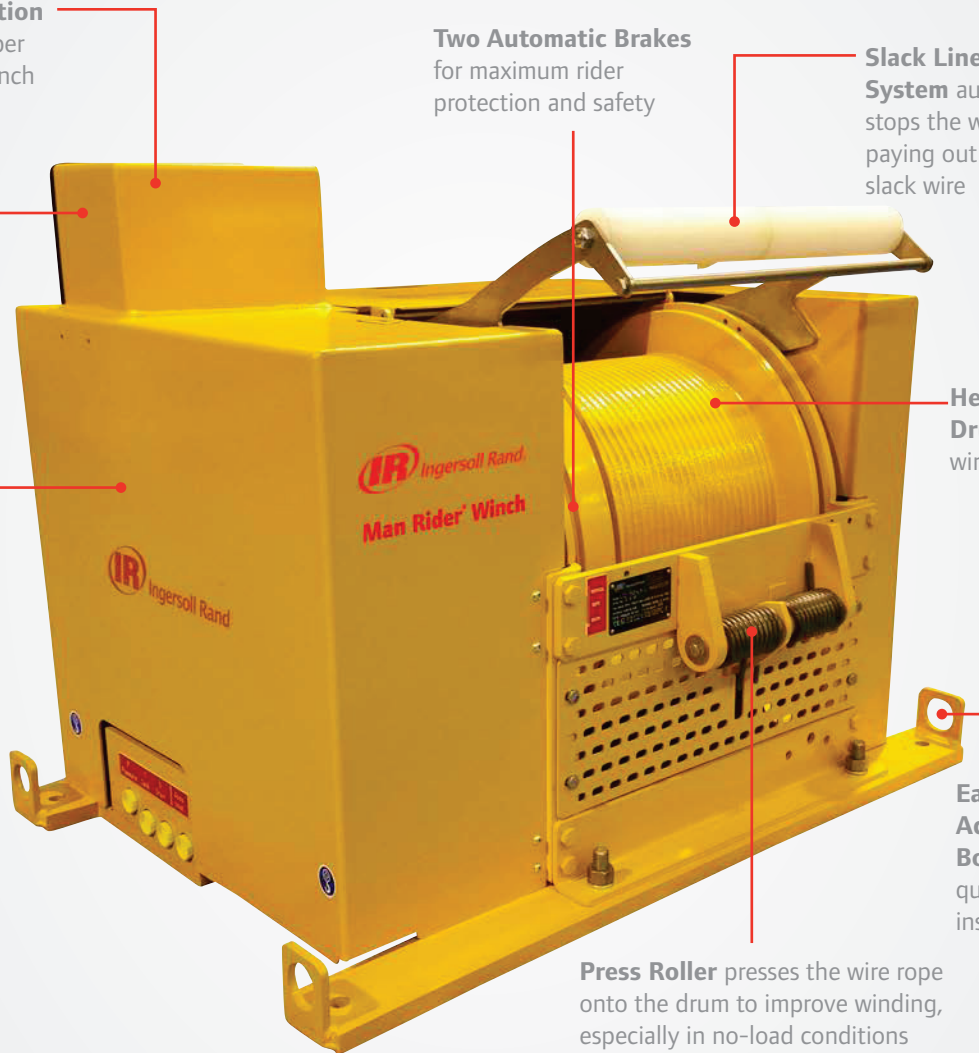
**Enclosed Controls** for protection from the elements and inadvertent operation

**Easily Adjustable Upper and Lower Limit Switches** prevent raising or lowering past set limits

**Helical Grooved Drum** assists with wire rope spooling

**Easily Accessible Bolt Points** for quick and simple installation

**Press Roller** presses the wire rope onto the drum to improve winding, especially in no-load conditions



## Ideal for:



Offshore



Onshore



Marine

### Lifting Ratings at 10:1 design factor and performance at 105 bar (1,800 psi) inlet pressure

Model	Line Pull Capacity			Lifting Speed at Top Layer	Operating Pressure	Max Flow with Rated Load	Max Drum Capacity	Rope Diameter	Net Weight
	First Layer kg (lb)	Mid Drum kg (lb)	Top Layer kg (lb)	m/min (f/fpm)	bar (psi)	l/min (gal/min)	m (ft)	mm (in)	kg (lb)
LS2-150HLR-L (onshore)	150 (330)	150 (330)	150 (330)	30 (98)	105 (1,523)	10 (2.64)	154 (505)	10 (3/8)	370 (816)

<sup>(1)</sup> Wire rope is tightly wound with no freeboard.



Ingersoll Rand (NYSE:IR) advances the quality of life by creating comfortable, sustainable and efficient environments. Our people and our family of brands—including Club Car®, Ingersoll Rand®, Thermo King® and Trane®—work together to enhance the quality and comfort of air in homes and buildings; transport and protect food and perishables; and increase industrial productivity and efficiency. We are a \$12 billion global business committed to a world of sustainable progress and enduring results.



[www.ingersollrandproducts.com](http://www.ingersollrandproducts.com)

Distributed by:

Ingersoll Rand, IR, the IR logo are trademarks of Ingersoll Rand, its subsidiaries and/or affiliates. All other trademarks are the property of their respective owners.

Unless otherwise noted this equipment is not designed for transporting people or lifting loads over people. It is the user's responsibility to determine the suitability of this product for any particular use and to check compliance with applicable regulations. Before installation, see maintenance and operations manual for additional warnings and precautions.

Nothing contained on these pages is intended to extend any warranty or representation, expressed or implied, regarding the product described herein. Any such warranties or other terms and conditions of sale of products shall be in accordance with Ingersoll Rand's standard terms and conditions of sale for such products, which are available upon request.

Product improvement is a continuing goal at Ingersoll Rand. Designs and specifications are subject to change without notice or obligation.