

HAND WORMGEAR WINCHES MANIBOX VS 250 TO 3500 KG



CE – Comply with Machines Directive 2006/42/EC.
Developped and manufactured in accordance
with standard NF E N 13157.

- Position: flat or wall-mounted.
- Industry.
- Shows, sceneries.
- Water treatment, water dams.
- Sports rooms.
- Hanging chandeliers...

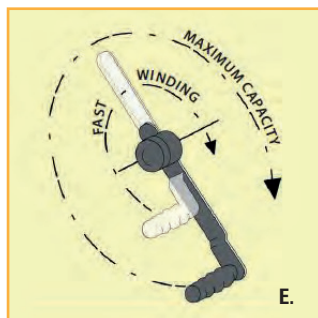
▲ Technical properties

- Absolute safety by wormgear reduction + automatic brake.
- Stainless steel ratchet spring.
- Mechanical parts machined and protected by cataphoresis.
- Covers over mechanical parts.
- Disengageable drum, no load only, associated with a failsafe system in the rope wind direction (except on VS 250/320) (patented).
- Ergonomic and removable crank with rotating grip. This crank arm can be adjusted to minimise effort according to the loads.
- Crank positioned on the left (VS 250/320, 500/750 and 3000/3500) or on the right (VS 1000/1450, 1500/2000, 2000/2500).
- Finition: painted frame, galvanized or stainless steel.

▲ VS 500



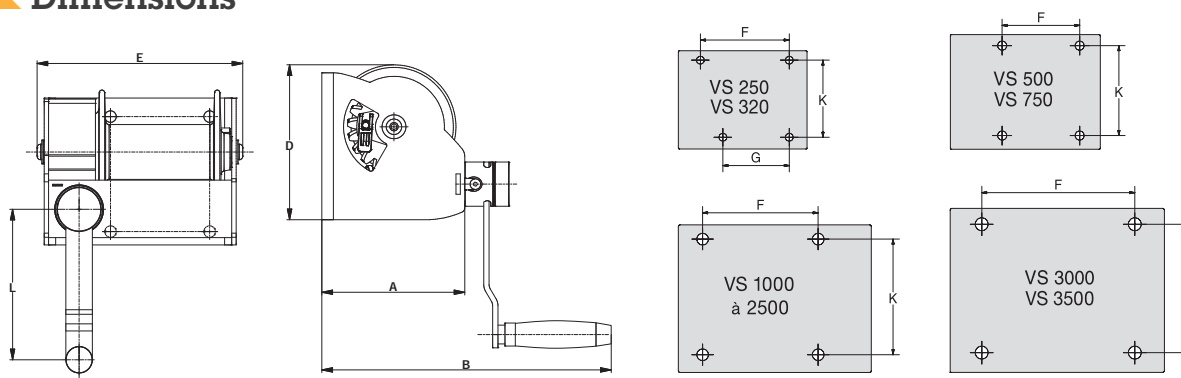
▲ Strong points



- A. Absolute safety: worm screw and automatic brake.
- B. Disengageable drum (except on VS 250/320).
- C. Captive crank adjusting knob.
- D. Highly reliable rope fastener, not requiring any special tool.
- E. Adjustable crank handle for fast winding or otherwise, maximum capacity.
- F. Galvanized frame available.

HAND WORMGEAR WINCHES MANIBOX VS 250 TO 3500 KG

Dimensions



Models	VS 250	VS 320	VS 500	VS 750	VS 1000	VS 1450	VS 1500	VS 2000	VS 2000	VS 2500	VS 3000	VS 3500
A mm	140	140	162	162	302	302	350	350	356	356	480	480
B mm	307	307	325	325	470	470	518	518	520	520	640	640
D mm	142	142	175	175	302	302	330	330	390	390	450	450
E mm	206	206	233	233	322	322	370	370	420	420	530	530
F mm	130	130	112	112	167	167	200	200	260	260	390	390
G mm	95	95	-	-	-	-	-	-	-	-	-	-
K mm	100	100	130	130	250	250	250	250	295	295	380	380
L mm	240	240	240	240	340	340	340	340	340	340	340	340

Applications



1. Tautening conveyor belts.



2. Lifting of molds in the industry.



3. Valve lifting.



4. Special winch for stage equipment.

Technical characteristics

References	VS 250	VS 320	VS 500	VS 750	VS 1000	VS 1450	VS 1500	VS 2000	VS 2000	VS 2500	VS 3000	VS 3500
Capacity 1st layer kg	380	380	750	750	1450	1450	2000	2000	2500	2500	3500	3500
Capacity top layer kg	250	320	500	750	1000	1450	1500	2000	2000	2500	3000	3500
Nb of layers	4	2	4	1	4	1	3	1	2	1	2	1
Wire rope cap. 1st layer m*	2.5	2.5	3	3	5.5	5	5.5	5.5	7	7	7.5	7.5
Wire rope cap. top layer m*	15	6	18	3	30	5	23	6	17	6	18.5	7.5
Wire rope Ø mm	5	6	7	7	9	10	11.5	12	13	13	16	16
Lift per crank revolution mm	17	17	11	11	8	8	6	6	5	5	3	3
Max. hand force on crank kg	11	11	14	14	14	14	14	14	14.5	14.5	15	15
Weight (without wire rope) kg	7.5	7.5	12	12	37.5	37.5	52	52	80	80	140	140

The indicated rope diameter corresponds to the capacity on the top layer with a safety coefficient equal to (about) 5 when lifting with non-rotating rope.

* Rope and hook extra (see p.88 to 91).